
www.trustsmarhome.com



Item 74055 Version 1.0
Visit www.trustsmarthome.com
For the latest manuals

MAINS SOCKET SWITCH

AC-3000 MAINS SOCKET SWITCH

Read these simple guidelines. Not following them may be dangerous and faulty installation will invalidate any warranty that may apply to this product.

COMPATIBILITY

This receiver works with all Trust SmartHome transmitters.

FUNCTIONALITY

Wall socket on/off receiver for switching lights or electronic devices.

TECHNICAL SPECIFICATIONS

- | | |
|-----------------------------|---|
| • Power supply input | 220-240 VAC 50 Hz |
| • Maximum load | 3000 Watt |
| • RF frequency | 433.92 MHz |
| • RF range | Up to 30 m indoor/70 m outdoor (optimal conditions) |
| • Standby power consumption | 0.5 Watt |
| • Memory addresses | 6 |

WIRELESS RADIO SIGNAL

- The 433.92 MHz radio signal passes through walls, windows and doors.
- Indoor range: up to 30 m. Outdoor range: up to 70 m. (optimal conditions)
- The range is strongly dependent on local conditions, such as the presence of metals. For example, the thin metal coating in Low-emissivity (Low-E) glass has a negative impact on the range of radio signals.
- There may be restrictions on the use of this device outside the EU. If applicable, check whether this device complies with local directives.

MAXIMUM LOAD

Never connect lights or equipment that exceed the maximum load of the receiver, as it can result in defects, a short circuit or fire.

SHOCK HAZARD

Exercise caution when installing a receiver. Voltage may be present, even when a receiver is switched off.

LIFE-SUPPORT

Never use Trust SmartHome products for life-support systems or other applications in which equipment malfunctions can have life-threatening consequences.

INTERFERENCE

All wireless devices may be subject to interference, which could affect performance. The minimum distance between 2 receivers should be at least 50 cm.

REPAIRING

Do not attempt to repair this product. There are no user-serviceable parts inside.

WATER-RESISTANCE

This product is not water-resistant. Keep it dry. Moisture will corrode the inner electronics and can result in a short circuit, defects and shock hazard.

CLEANING

Use a dry cloth to clean this product. Do not use harsh chemicals, cleaning solvents, or strong detergents.

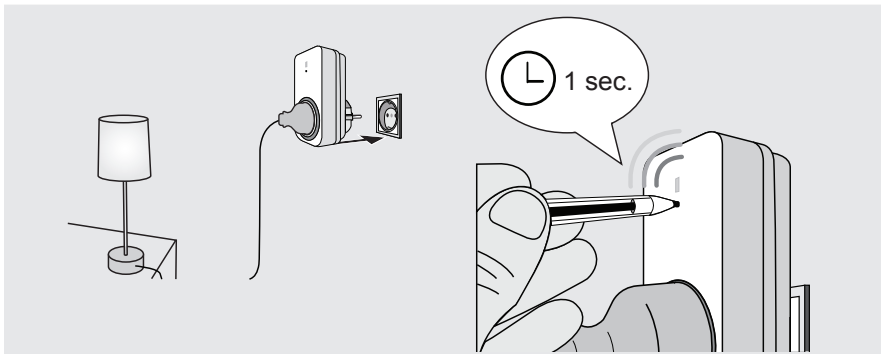
HANDLING

Do not drop, knock, or shake the device. Rough handling can break internal circuit boards and fine mechanics.

ENVIRONMENT

Do not expose the product to excessive heat or cold, as it can damage or shorten the life of electronic circuit boards.

AC-3000 MAINS SOCKET SWITCH



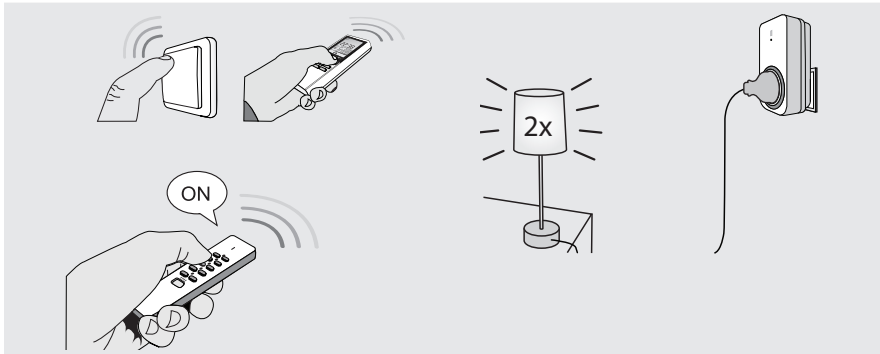
1. Connect lamp/device and place receiver

First check if the lamp or device is turned on. Then plug the lamp or device into the receiver and plug the receiver into a socket. Do not exceed the maximum load: 3000 W.

2. Activate learn-mode

Press the learn-button on the receiver for 1 second. The learn-mode will be active for 15 seconds, during which the LED-indicator will blink slowly.

AC-3000 MAINS SOCKET SWITCH



3. Assign Trust SmartHome transmitter code

Send an ON-signal with any Trust SmartHome transmitter while the learn-mode is active, to assign the code to the receiver's memory.

4. Code confirmation

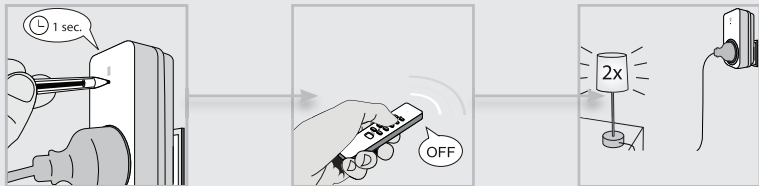
The receiver will switch on/off 2 times to confirm the code has been received. The receiver can store up to 6 different transmitter codes in its memory. The memory will be preserved when the receiver is moved to another socket or in case of power failure.

AC-3000 MAINS SOCKET SWITCH



5. Manual operation with a Trust SmartHome transmitter

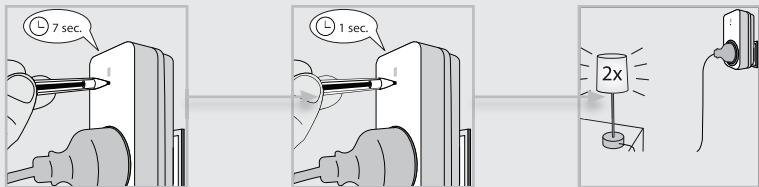
- (1) Press ON to switch the receiver on.
- (2) Press OFF to switch the receiver off.



6. Single code delete

- (1) Press the learn-button for 1 second. The learn-mode will be active for 15 seconds, during which the LED-indicator will blink slowly.
- (2) While the learn-mode is active, send an OFF-signal of a specific Trust SmartHome transmitter to delete that code.
- (3) The receiver will switch on/off 2 times to confirm code deletion.

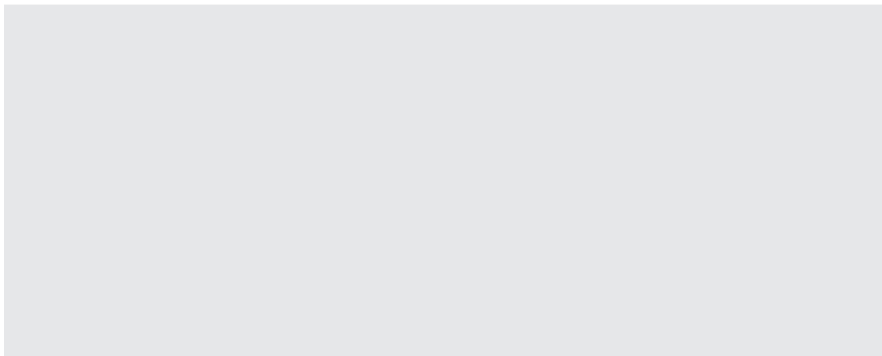
AC-3000 MAINS SOCKET SWITCH



7. Full memory delete

- (1) Press and hold the learn-button of the receiver (approx. 7 sec.) until the LED-indicator starts blinking fast. The delete mode will be active for 15 seconds.
- (2) Press the learn-button again for 1 second while the delete mode is active.
- (3) The receiver will switch on/off 2 times to confirm memory deletion.

AC-3000 MAINS SOCKET SWITCH



AC-3000 MAINS SOCKET SWITCH

CE Declaration of Conformity

Trust International B.V. declares that this TRUST SMART Home-product:

Model: AC-3000 MAINS SOCKET SWITCH
Item number: 74055
Intended use: Indoor

is in compliance with the essential requirements and other relevant provisions of the following directives: EMC Directive, Low Voltage Directive and R&TTE Directive.

The product is compatible with the following norms/standards:

EN 61058-1:2002	IEC 61000-4-8:2009(ED.2.0)	EN 61000-4-4:2004
IEC 61058-1:2000+A1:2001	IEC 61000-4-11:2004(ED.2.0)	EN 61000-4-5:2006
EN 55015:2006+A1:2007	EN 300 220-1 V2.1.1 (2006-04)	EN 61000-4-6:2009
EN 61000-3-2:2006, Class C	EN 300 220-2 V2.1.2 (2007-06)	EN 61000-4-11:2004
EN 61000-3-3:2008	EN 301 489-1 V1.8.1 (2008-04)	IEC 1000-2-2:1990
EN 61547:1995+A1:2000	EN 301 489-3 V1.4.1 (2002-08)	
IEC 61000-4-2:2008(ED.2.0)	EN 55022:2006, Class B	
IEC 61000-4-3:2006+A1:2007(ED.3.0)	EN 61000-3-2:2006, Class A	
IEC 61000-4-4:2004+A1:2010(ED.2.0)	EN 61000-3-3:2008	
IEC 61000-4-5:2005(ED.2.0)	EN 61000-4-2:2009	
IEC 61000-4-6:2008(ED.3.0)	EN 61000-4-3:2006+A1:2008	

Authorized representative



H. Donker, Procurement Director
Dordrecht, 1-1-2015

TRUST SMART Home
LAAN VAN BARCELONA 600
3317DD DORDRECHT
NEDERLAND
www.trustsmarthome.com



If possible, dispose of this product at a recycling center. Do not dispose of this product with the household waste. Visit www.trustsmarthome.com for more information.

Warranty

This product is covered by the legal warranty that applies to your country and it begins on the day of purchase. For additional information, visit: www.trustsmarthome.com/warranty

Copyright

The contents of the "Manual" is subject to copyright protection. Without prior written permission, reproducing or copying is prohibited. Information in these documents is subject to change without prior notice. Check www.trustsmarthome.com for updates.